

HUNTERS®

HERE TO GET *you* THERE



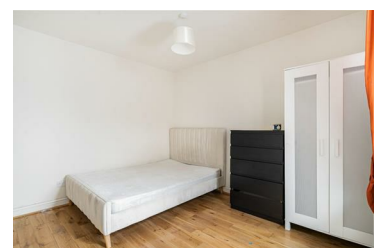
Westow Hill, London Asking Price £275,000

Council Tax:

Tenure: Leasehold



A two-bedroom flat in one of SE19's most desirable residential pockets, offering, excellent rail connections from Crystal Palace & Gipsy Hill, access to major parks and green space, outstanding leisure facilities and community amenities...



10A Dartmouth Road, Forest Hill, SE23 3XU
Tel: 020 3002 4089 Email: foresthill@hunters.com
<https://www.hunters.com>